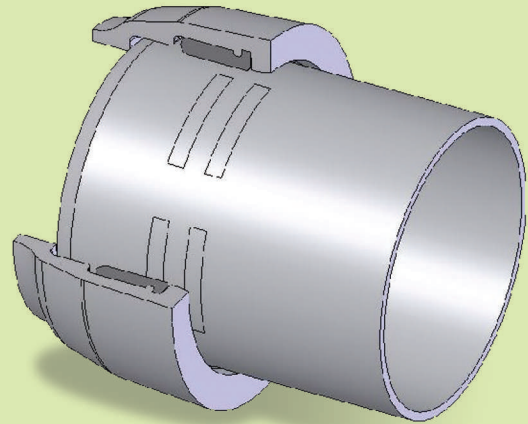


## Various Jointing Systems

### 1) Socket and spigot push-on joints

The socket and spigot push fit joint is a simple male-female flexible joint that uses the compression of a synthetic rubber gasket to provide the watertight seal. The simplicity of the joint and its flexible nature accommodates angular deflection and some longitudinal withdrawal without any loss in performance. The design of the gasket incorporating a hard 'heel' and softer 'bulb' ensures that gasket compression is achieved without it being displaced on insertion of the spigot.



#### Rubber Gaskets

Gaskets are normally made of EPDM Rubber as per ISO 4633 / EN 681. These gaskets are approved by WRAS (Water Regulations Advisory Scheme) UK for safe use with potable drinking water.

#### Jointing Procedure

- Clean:** Clean the inside of the socket and outside of the spigot end of the two pipelines to be joined.
- Install the gaskets:** Insert the rubber gasket into the groove of the socket.
- Lubrication:** Apply a thin layer of lubricant on the visible surface of gasket and the plain end of pipe.
- Assembly:** Align the two pipes and insert the plain end into the socket.
- Check:** Verify that the gasket is properly seated in its housing around the perimeter.

#### Electrosteel Ductile Iron Pipe joint designs are Type Tested

Electrosteel's design of the socket and the rubber gasket ensures leak-tight joint through Type Tests as per BSEN:545 and ISO:2531. Type Test is testing the pipe and pipe joint at extreme working conditions (the product and use) to ensure satisfactory performance.

